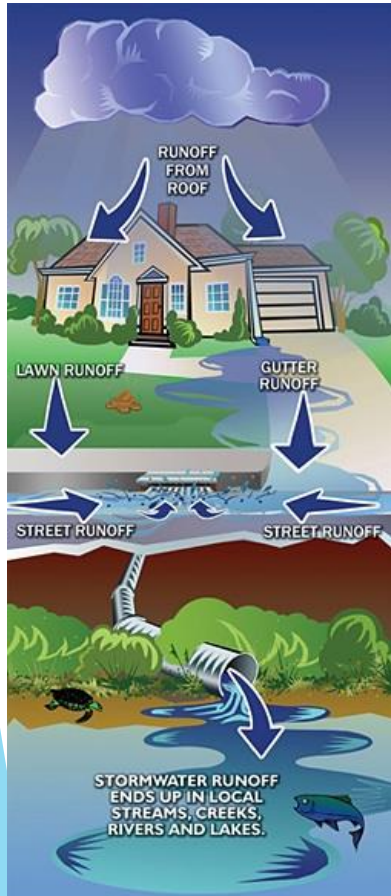


NPDES STORMWATER TRAINING FOR MUNICIPALITIES

- NPDES & Stormwater
- Sewers vs. Stormdrains
- NPDES Requirements for Municipalities
- Illicit Discharges and Hazardous Spill Response
- Best Management Practices

WHAT IS NPDES?

National Pollutant Discharge Elimination System



- Federal mandate that prohibits pollutants from entering the storm drain system.
- Created to protect oceans and keep them free of pollutants.
- NPDES permits are required for large **Municipal Separate Storm Sewer Systems (or “MS4”s)**, which are systems serving a population of 250,000 or more.

WATERSHED MANAGEMENT

The City of Torrance straddles and is tributary to three watersheds:

DOMINGUEZ CHANNEL



SANTA MONICA
BAY



MACHADO LAKE

The City protects water quality by actively managing Stormwater through NPDES

STORMWATER 101



- Stormwater is rain or melting snow and is the most common way for pollution to reach our waterways (stream, river, lake, or the ocean).
- As stormwater travels across lawns, parking lots, roofs, roadways, etc., it picks up pollution on its way to the nearest storm drain, frequently located along the curbs of parking lots and roadways. (often called a 'catch basin' or 'gutter')

STORMWATER 101 (CONT.)

Stormwater pollution is the untreated contaminated water that drains from the streets, and through the municipal storm drain system. Common pollutants are:

- Trash (wrappers, cigarette butts Styrofoam
- Toxins (used motor oil, antifreeze, fertilizer, pesticides, sewage overflow and pet waste)
- Anything dumped or dropped on the ground or in the gutter contributes to stormwater pollution, and unfortunately, much of this is not biodegradable and can be harmful to marine life.

EFFECTS OF STORMWATER POLLUTION

Health Effects



Poses a serious health risk to people swimming or fishing in our water bodies, particularly within 400 yards of a storm drain outlet and threatens our drinking water and polluted runoff empties into our waterways, contaminating our coastal waters

Endangers countless marine plants and marine animals which can become sick or die from contact with stormwater pollution, plastics, chemicals, and toxins.

Environmental Effects



Young sperm whale washes up on beach with a stomach full of plastic

Neighborhood Effects



- Clogged catch basins significantly decrease the quality of life in many neighborhoods throughout the County
- This buildup of trash and debris can attract rats and cockroaches, create foul odors, and clog the storm drain system – affecting neighborhood aesthetics and property values
- It also creates the potential for local flooding during rain and snow events, as litter, leaves and other debris clog catch basins along streets and intersections

URBAN RUNOFF AND OCEAN POLLUTION

Urban runoff is the largest source of pollution to Southern California's coastal waters. Urban pollution may come from natural sources, but the most detrimental are those emissions related to human activities



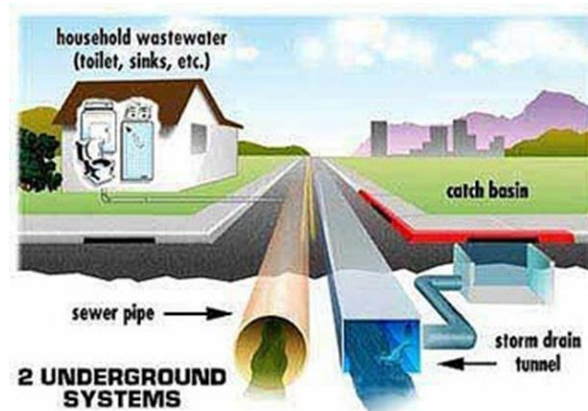
THE IMPACT OF TRASH & POLLUTION

STORMDRAINS, SEWERS AND CATCH BASINS

The sewer system and the storm drain system are two ***completely separate drainage systems***.

The [sewer system](#), or sanitary wastewater system, takes all household wastewater from toilets, showers and sinks, and routes it through your plumbing system to a [Treatment Plant](#). Once there, it receives 3 levels of filtration treatment before being discharged 5 miles out into the ocean.

- The [stormwater](#) system, was intended to route rainwater quickly off the streets during a heavy storm, but unfortunately takes all urban runoff along with it. Chemicals, trash and debris from lawns, parking lots and streets, either intentionally or accidentally spilled, goes straight into the ocean.



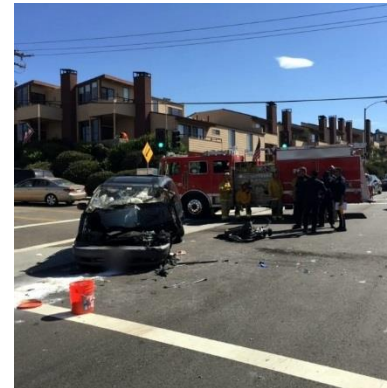
PLANNED DISCHARGES

Procedures can be employed to reduce pollutants from discharges associated with water utility operation and maintenance activities. Planned discharges may include fire hydrant testing, flushing water supply mains after new construction, flushing lines due to complaints of taste and odor, dewatering mains for maintenance work. Unplanned discharges from treated, recycled water, raw water, and groundwater systems operation and maintenance activities can occur from water main breaks, sheared fire hydrants, equipment malfunction, and operator error.

Public Agency Activities:
Sewers, Stormdrain & Water Line
maintenance cleaning and flushing



Fire Dept. Activities:
Emergencies, Training, Fire Hydrant &
Sprinkler Testing



HAZARDOUS SPILLS & ILLICIT DISCHARGES

- Stormwater regulations define "**illicit discharge, hazardous spill or illegal dumping**" as *"any discharge to a municipal separate storm sewer that is not composed entirely of stormwater"*

Illicit discharges are a problem because, unlike wastewater which flows to a wastewater treatment plant, stormwater generally flows to waterways without any additional treatment. Illicit discharges often include pathogens, nutrients, surfactants, and various toxic pollutants.



NPDES VIOLATIONS



**EACH DEPARTMENT AND
EVERY EMPLOYEE PLAYS A
ROLE IN STORMWATER
MANAGEMENT**

COMMUNITY DEVELOPMENT DEPARTMENT

Administration

- NPDES Annual Report, Training, Outreach, Education, Record Keeping and Reporting

Building Regulations

- Inspections, Construction BMP's (sandbags in place, sediment control, enforcement for tracking, illicit discharges, mud to/from site)

Planning

- Low Impact Development for Site Design & Landscape Planning
- Trash Enclosure requirements

Environmental

- Property Maintenance Complaints
- NPDES Violations (source control)

BUILDING REGULATIONS

- Inspections, Construction BMP's (sandbags in place, sediment control, enforcement for tracking, illicit discharges, mud to/from site)



Poorly maintained BMPs can result in significant quantities of sediment being discharged to storm drains.

ENVIRONMENTAL DIVISION

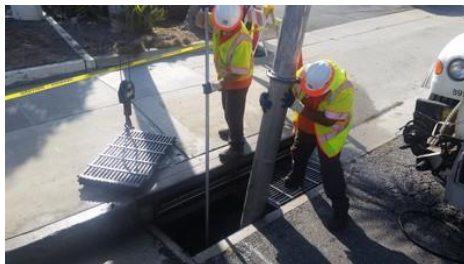
The Environmental Division responds to NPDES complaints and violations at the source. Our enforcement is progressive; once a violation is verified, we typically give up to three (3) notices, 1st, 2nd and final. The notices may either be posted at the property or sent in a form letter by mail or a combination of these efforts. The property owners are provided information and education on Stormwater pollution and property maintenance.



PUBLIC WORKS

- Water & Sewer Utility Maintenance
- Inspection of Storm Drain Channels
- Catch Basin Prioritization & Clean Outs
- Recycling & Waste Management
- Street Sweeping
- Regional & Restoration Projects
- Pesticide and Landscape Management
- Water Quality Monitoring & Testing (TMDL)
- Cleanup of sewage from a City source
- Pickup and proper disposal of Industrial waste in ROW not traceable to an individual parcel/responsible party

NOTE: If the type or quantity of waste is beyond the capabilities of Public Works, Public Works will contact one of the appropriate City contracted cleanup companies. (POLICY 10)



FIRE DEPARTMENT

- First Response for Illicit Discharges & Hazardous Spills
- Vehicle Accident and Trauma Scene Cleanup
- Hazardous Material and Waste Handling
- **Community Risk Reduction Division (CRRD)**
 - Violations in the Public Right of Way
 - Stormwater Inspections
 - Commercial Industrial Facilities Program

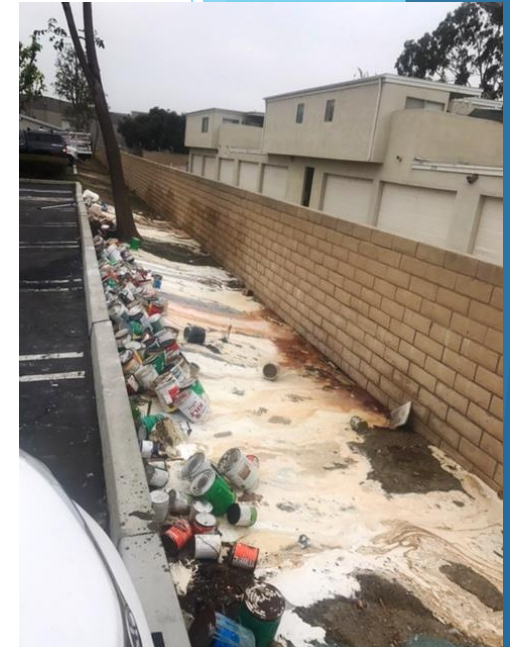


COMMERCIAL & INDUSTRIAL FACILITIES MANAGEMENT

- CRRD also oversees the Industrial Commercial Facilities Inspection Program. The stormwater inspector works with staff to plan and review each workday's inspection locations.
- Staff performs Commercial and Industrial facilities inspections to include Restaurants and Automotive Facilities to ensure compliance.



COMMERCIAL AND INDUSTRIAL VIOLATIONS



Roles of Other Departments

- **Transit-** Install and Maintain Trash Receptacles at Transit Stops
- **General Services/Fleet-** Vehicle Maintenance/Material Storage/Spill Control, Car Washing
- **Streetscape, Parks Services-** Landscape and Recreational Facilities Management, Integrated Pest Control, Parking Facilities Management, Irrigation Control, **Pet Waste Stations**
- **CM-** Compliance, Illegal Dumping Hotline

BEST MANAGEMENT PRACTICES (BMPs)

- Any process, program criteria, operating method, measure or device which controls, prevents, removes or reduces pollution
- BMPs are implemented to address:
 1. Spill prevention, control and clean up
 2. Waste disposal and handling
 3. Building and grounds maintenance
 4. Employee training



BENEFITS OF BMPs

- Reduces clean-up costs
- Increases customer and employee safety
- Helps reduce local pollution
- Permit compliance
- Prevent violations and/or fines



I'D LIKE TO BE PART OF
THE SOLUTION...WHAT
CAN I DO?

Don't Litter!



Everything dropped, tossed, spilled or discarded onto streets and gutters will eventually make its way into the storm drain system--and out to the ocean!

Illegal dumping of trash, paint products, motor oil and other chemicals into storm drains is against the law! Take your used motor oil to a certified collection site.

Report Illegal Dumping



Pick up After Your Pets



Animal waste that runs off of lawns and sidewalks sends harmful bacteria into the storm drain system and out into the ocean, creating problems for [swimmers](#) and fish.

Reduce, Reuse, Recycle



Use reusable bags and bottles whenever possible. Skip the straw and sip your drink or use a metal, paper or bamboo straw. Switch to reusable cutlery and avoid using plastic!

COMMUNITY OUTREACH & RECYCLING EVENTS

City of **TORRANCE** California

DISASTER PREPAREDNESS EXPO

CITY YARD OPEN HOUSE & CAR SHOW

ENVIRONMENTAL FAIR

TORRANCE, CA 2018

FREE & FUN FOR THE WHOLE FAMILY

SATURDAY, JUNE 2, 2018
10 A.M. - 2 P.M. | 20600 MADRONA AVE.
FREE PARKING & SHIRTLETS AVAILABLE @ COURT HOUSE ON MAPLE
TORRANCECA.GOV/OPENHOUSE

CITY OF TORRANCE RECYCLING EVENT

FREE Paper Shredding and Electronics Recycling

Saturday, November 16, 2019
8 a.m. to noon

Torrance Residents ONLY!

Do NOT bring hazardous waste to this event. Hazardous waste includes items such as paint, batteries, medications, glass, fluorescent bulbs and chemicals such as pesticides, cleaners and insect repellents. These types of items will not be accepted at this event.

Torrance City Hall employee parking lot (near Torrance Courthouse off Maple Avenue)

- Free Paper Shredding Drop-off**
Limit of 8 boxes or bags per vehicle (secure information only-no books, 3-ring binders large clips or magazines).
- Free Electronics Drop-off**
TVs, monitors, cell phones, small appliances and other electronics for safe and responsible recycling.

City of Torrance Public Works
For more information, call (310) 781-6900 or visit www.TorranceCA.Gov/PublicWorks or www.RecycleTorrance.Org

CITY OF TORRANCE IN PARTNERSHIP WITH **AI Muratsuchi DISTRICT 5**

TORRANCE BEACH CLEANUP

CALIFORNIA COASTAL CLEANUP

SATURDAY SEPTEMBER 21ST
9AM-12PM

201 PASEO DE LA PLAYA
TORRANCE CA 90277

PLEASE JOIN THE EFFORT

HONDA The Power of Dreams
TORRANCE Public Works
City of Torrance
Marine City
California Coastal Cleanup
Habitat for Humanity

RECYCLE A USED OIL FILTER AND GET A NEW ONE FOR FREE!*

All events Saturdays from 7am-1pm!

SEPTEMBER 14 2019	DECEMBER 7 2019	FEBRUARY 8 2020	JUNE 13 2020
O'Reilly's 4308 Pacific Coast Hwy Torrance, 90505	AutoZone 17490 Hawthorne Blvd. Torrance, 90504	O'Reilly's 4900 W. 190th St. Torrance, 90503	Pep Boys 3124 Sepulveda Blvd. Torrance, 90505

*City of Torrance residents may receive up to 2 new filters in exchange for 2 used filters. Restrictions apply. While supplies last.

TORRANCE RESIDENTS WHO BRING IN USED OIL OR OIL FILTERS ARE ELIGIBLE TO RECEIVE A FREE MOTOR OIL CHANGE KIT.

RESIDENTS MUST BRING A USED OIL FILTER TO THE STORE TO RECEIVE A NEW FREE OIL FILTER.

USED OIL MUST BE PROPERLY STORED IN A CLEAN, UNCONTAMINATED CONTAINER. LIMIT - 5 GALLONS.

FOR MORE INFORMATION, PLEASE CALL 888-HEY-SLICK or visit RecycleTorrance.org



Got Drugs?

Turn in your unused or expired medication for safe disposal

Saturday, April 27, 2019
10 a.m. - 2 p.m.

Location:
Torrance Police Department
3300 Civic Center Dr
Torrance CA 90503

dispose unused

In partnership with:

For more information, please visit www.dea.gov

TOO TOXIC TO TRASH

FREE Household Hazardous & Electronic Waste Recycling Roundup

Saturday, June 15 • 9AM - 3PM
American Honda
1919 Torrance Boulevard
Torrance, CA 90501
(Enter from Harper's Way off Van Ness Ave.)

- Open to Los Angeles County residents.
- No business waste accepted.
- Bring items in a sturdy box, preferably in their original labeled containers.
- Limit of 15 gallons or 125 pounds of hazardous waste per trip.
- No explosives, ammunition, radioactive materials, trash, tires, large appliances like refrigerators, stoves and washing machines or controlled substances.
- Be prepared to leave containers and boxes. Remove all other items from your trunk. Please remain in your vehicle during collection.

888-CLEAN-LA • CleanLA.com • LACSD.org • 800-238-0172

CONTACT INFORMATION

HAZARDOUS MATERIAL SHOULD IMMEDIATELY BE REPORTED TO FIRE DISPATCH

Response/Reporting of NPDES violations (see Policy 10)

Fire Prevention (Hazardous Spills, Illicit Discharges in public right-of-way)- (310) 618-2973

Environmental (Residential Property maintenance , potential NPDES) – (310) 618-2707

Response/Reporting of Illicit Discharges (not traced to an individual parcel)

PW/ Wastewater, 781-6900

NPDES Program Manager/Liaison

PW/John Dettle, (310)781-6900 or CM/Fran Fulton, (310) 618-5880



Recycling and Waste Management

Alison Sherman, (310) 781-6916

Report Illegal Dumping of Trash/Toxics/Hazardous Waste into Stormdrains

1-888-CleanLA or log onto Clean LA website to report online.

State and County & Local Resources:

- State Water Resources Control Board (SWRCB) <http://www.swrcb.ca.gov/>
- Los Angeles Regional Water Quality Control Board (LARWQB)
- California Stormwater Quality Association (CASQA)
- 888-CLEANLA

PUBLIC INFORMATION & RESOURCES

The City of Torrance has dedicated websites for NPDES info:

<http://recycletorrance.org/>

<https://www.torranceca.gov/our-city/community-development/environmental/npdes>

<https://www.torranceca.gov/government/fire/community-risk-reduction-division/national-pollution-discharge-elimination-system>

<https://www.torranceca.gov/3627.htm>

Additional Stormwater & Recycling Resources:

<https://www.casqa.org/>

<http://www.waterboards.ca.gov/>

<http://www.epa.gov/>

<http://dpw.lacounty.gov/epd/cleanla/>