

FREQUENTLY ASKED QUESTIONS

What is the purpose of the C&D Waste Management Plan through the Torrance Waste Tracking System with the Green Halo website? The C&D Waste Management Plan submitted in the Green Halo website helps you plan the activities of your construction project. It includes a list of authorized haulers, recycling facilities, donation facilities, and a table to calculate weights. Please see the Green Halo brochures for details on account setup and information upload.

Where can I start the C&D Waste Management Plan application online? Once your building permit application is submitted, a case will be created to monitor the C&D recycling activities of your project. You will receive a separate email notification directly from Green Halo Systems to activate your account (there is no need to create your account). To complete an online C&D Waste Management Application, log on to the Green Halo website. This website will allow you to plan the recycling of the projects's building phase and let the C&D specialists help you with the following steps to continue with other requirements.

Do we still need to fill out the C&D Waste Management plan application even if we did not do any demolition? Yes. Even if your project does not include a demolition phase, all projects will generate some C&D debris. To complete an online C&D Waste Management Application, log on to the Green Halo website. Did you know? Reuse or Salvage is highest and best use - better than recycling! Reuse is 100% diversion, so please include any reuse tonnage in your final WMP submittal in Green Halo.

Is there a penalty for not complying? Yes, projects that fail to comply with a WMP or meet the 65% C&D recycling requirements are subject to an administrative penalty of **\$10,000 for demolition projects and \$5,000 for construction and remodeling projects**. A project that includes demolition in addition to construction or remodeling will be subject to the demolition penalty amount.

DID YOU KNOW?

Torrance has partnered with Green Halo Systems

Green Halo allows contractors, recyclers, and other entities to comply with local, state, and federal recycling guidelines with incredible accuracy and efficiency. Green Halo also enables contractors, recyclers, cities, and county authorities to interact and communicate seamlessly throughout the progression of a construction project. The user-friendly and intuitive system provides valuable tools for maintaining a sustainable construction waste management plan while yielding real-time and historical data, charts, graphs, and reports.



greenhalo

GreenHaloSystems.Com

UNIVERSAL WASTE RECYCLING IS REQUIRED

Universal waste must be managed appropriately for all commercial construction projects and tenant improvements over 1,000 square feet per CALGreen Section 301.3. Universal waste includes mercury thermostats, batteries, CFL bulbs, fluorescent tubes, and ballasts.



Proper disposal of universal waste must be documented and submitted to the City through the Green Halo Systems website.

City of
TORRANCE
California

DEPARTMENT OF PUBLIC WORKS
PublicWorksWMP@TorranceCA.Gov
(310) 781-6900

City of
TORRANCE
California
DEPARTMENT OF PUBLIC WORKS



GUIDE TO TORRANCE'S Construction & Demolition (C&D) Waste Management Plan

IMPLEMENTED THROUGH
Green Halo Systems

TorranceCA.Gov/WasteManagementPlan
PublicWorksWMP@TorranceCA.Gov
(310) 781-6900

WHY IS THERE A RECYCLING ORDINANCE?

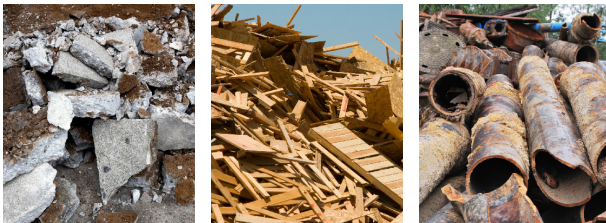
Construction and Demolition (C&D) waste represents a significant part of the solid waste stream. Most C&D material can be reused or recycled, conserving natural resources and saving valuable landfill space.

To recover recyclable C&D material as mandated by the state of California, the City adopted the Construction and Demolition Waste Management Ordinance (Section 43.8.1 of TMC). The ordinance requires that certain demolition and construction projects divert at least 65% of waste through recycling, salvage, or deconstruction.

When a permit is requested for a covered project that will generate C&D material, the project must submit a C&D Waste Management Plan and Compliance Report to meet the 65% diversion requirement.

WHAT IS CLASSIFIED AS C&D MATERIAL?

C&D debris is classified as any material generated from a construction and demolition project. This includes, but is not limited to:
Concrete, wood, metal, etc.



GREEN HALO SYSTEMS CONTRACTOR'S USER GUIDE FOR PLAN SUBMITTAL:



1. After receiving a Registration Confirmation email from Green Halo Systems, activate and fill out the Project Information in the Green Halo Systems web portal.
2. Provide the estimated quantities of materials that will be recycled, reused, and disposed.
3. Select your Hauling Method of how you will be removing your debris.
4. Identify and select one or more facilities you intend to use from the Authorized Facilities List.
5. Select "Submit the Project for Approval" in Green Halo. **The approval is required before permit issuance.**
6. Upload weight tickets directly to the Green Halo Systems web portal throughout the project.
7. At the end of the project, when you have uploaded all tickets, select "Submit For Final" in Green Halo for review and approval of the Compliance Report. **This approval is required before the final building inspection and Certificate of Occupancy.**
8. Upon completion of Compliance Report, compliant projects may proceed with final inspection. **Non-compliant projects will be subject to administrative penalties of up to \$10,000.**

WHAT ARE THE HAULERS' REQUIREMENTS?

The City of Torrance requires haulers to have an active business license to operate in the City. The Waste Management Plan in Green Halo includes a list of authorized haulers. Haulers not listed are NOT allowed to provide you services.

WHERE DO I RECYCLE THE C&D DEBRIS FROM MY PROJECT?

The City of Torrance Municipal code requires that at least 65% of waste generated from construction and demolition projects be diverted from landfills.

To see an updated list of mixed C&D debris recycling facilities with a 65% diversion rate, refer to the list of certified facilities in Green Halo.



WHAT TYPES OF PROJECTS REQUIRE C&D RECYCLING?

- **Non-Residential Additions** of a gross floor area, 1,000 sq. ft. or more.
- **Tenant Improvements** with \$200,000 valuation or more
- **All New Structures**
- **All Demolitions**

- **All Residential Additions**
- **All Residential Alterations and Remodels** with no increase in the building's conditioned area, volume, or size, where the value of the permitted work is \$20,000 or more